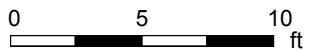


# 1364 Douro 3rd Line, Warsaw, ON

**Main Floor** Total Exterior Area 1628.21 sq ft  
Total Interior Area 1468.51 sq ft



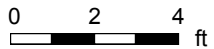
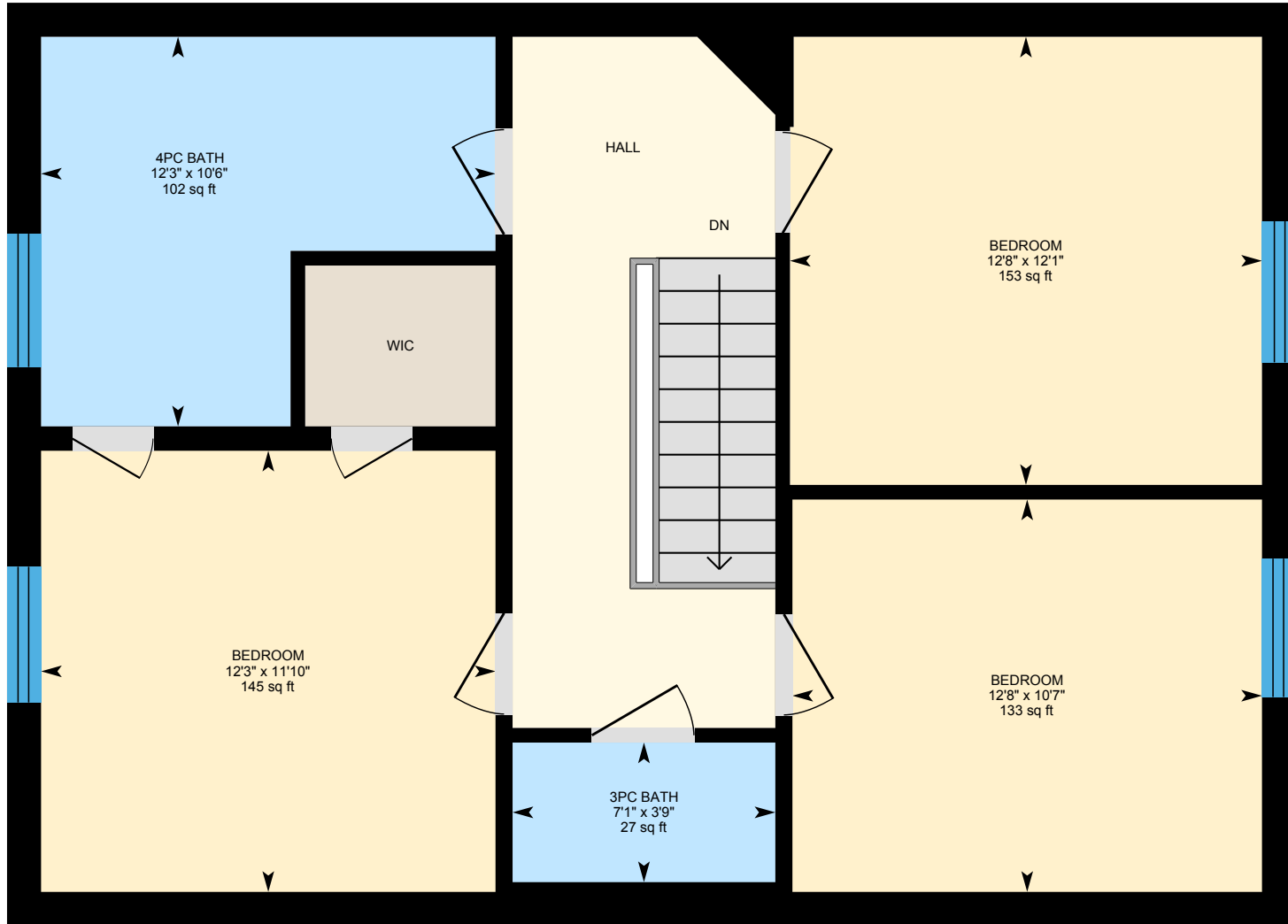
PREPARED: 2022/01/27



White regions are excluded from total floor area in iGUIDE floor plans. All room dimensions and floor areas must be considered approximate and are subject to independent verification.

# 1364 Douro 3rd Line, Warsaw, ON

2nd Floor Total Exterior Area 855.58 sq ft  
Total Interior Area 749.97 sq ft

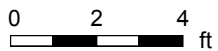
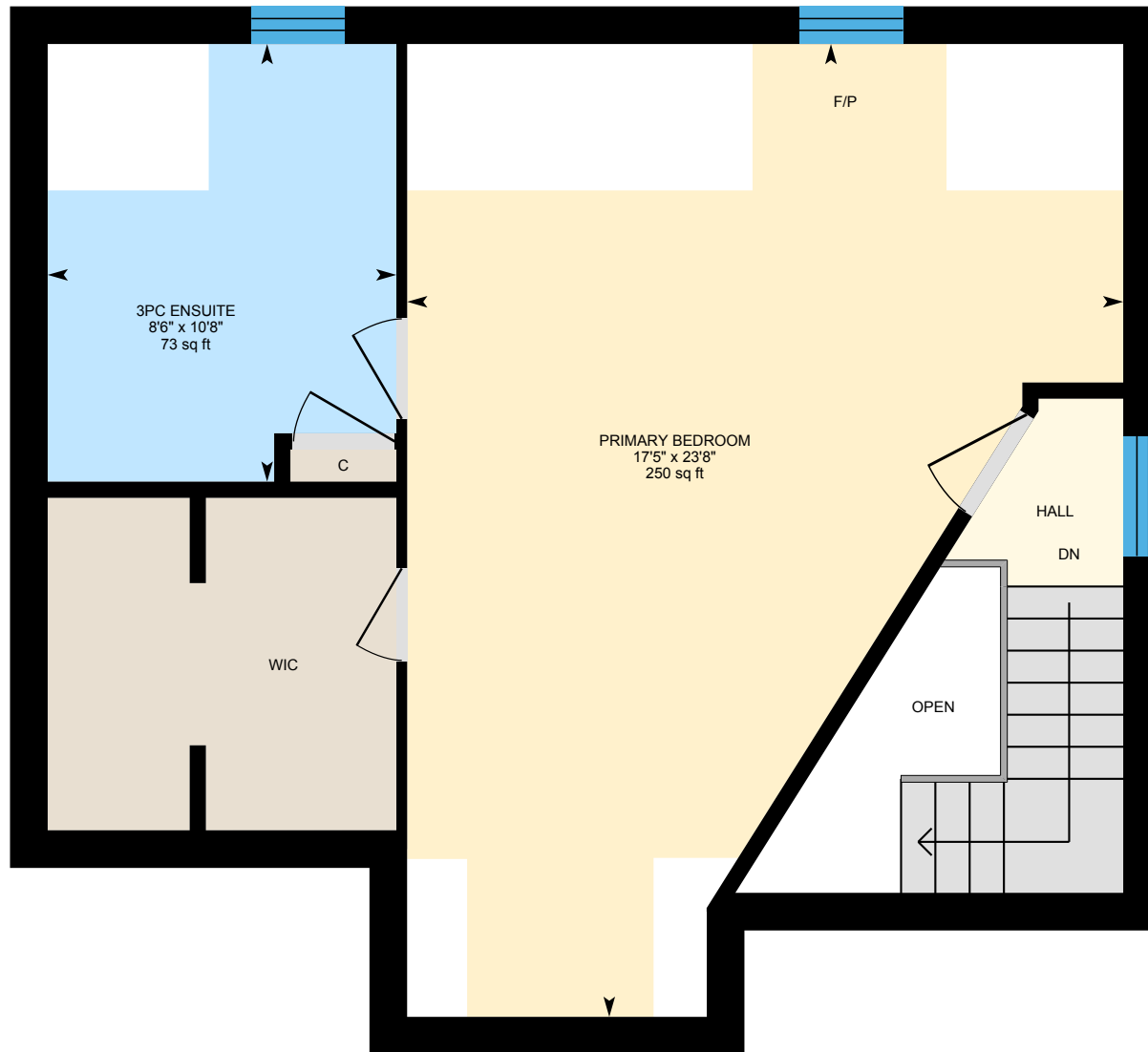


PREPARED: 2022/01/27

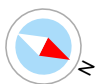


# 1364 Douro 3rd Line, Warsaw, ON

2nd Floor.2 Total Exterior Area 548.21 sq ft  
Total Interior Area 453.71 sq ft

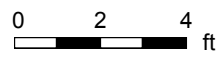
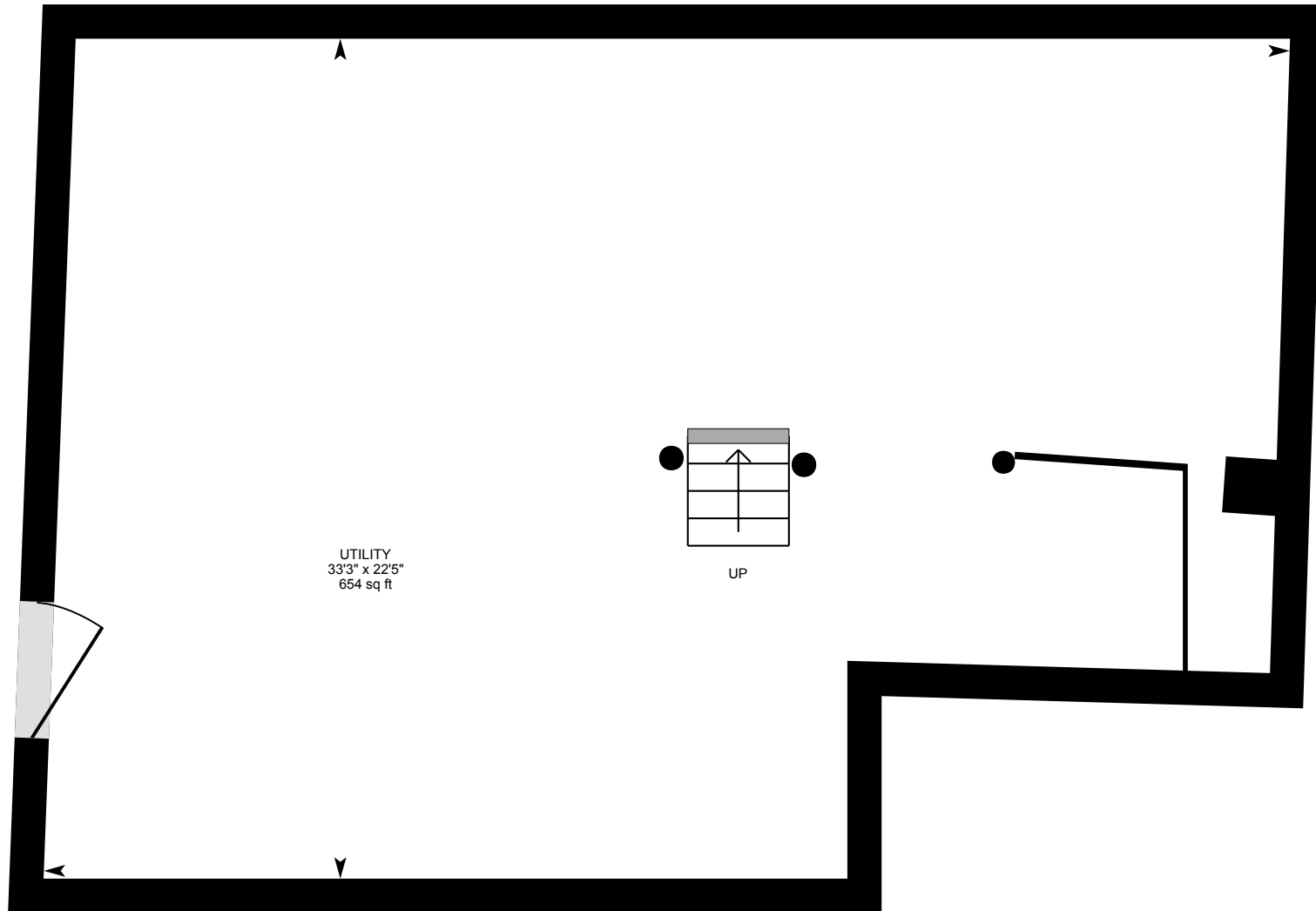


PREPARED: 2022/01/27



# 1364 Douro 3rd Line, Warsaw, ON

**Basement 2** Total Exterior Area 118.48 sq ft  
Total Interior Area 3.69 sq ft

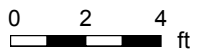
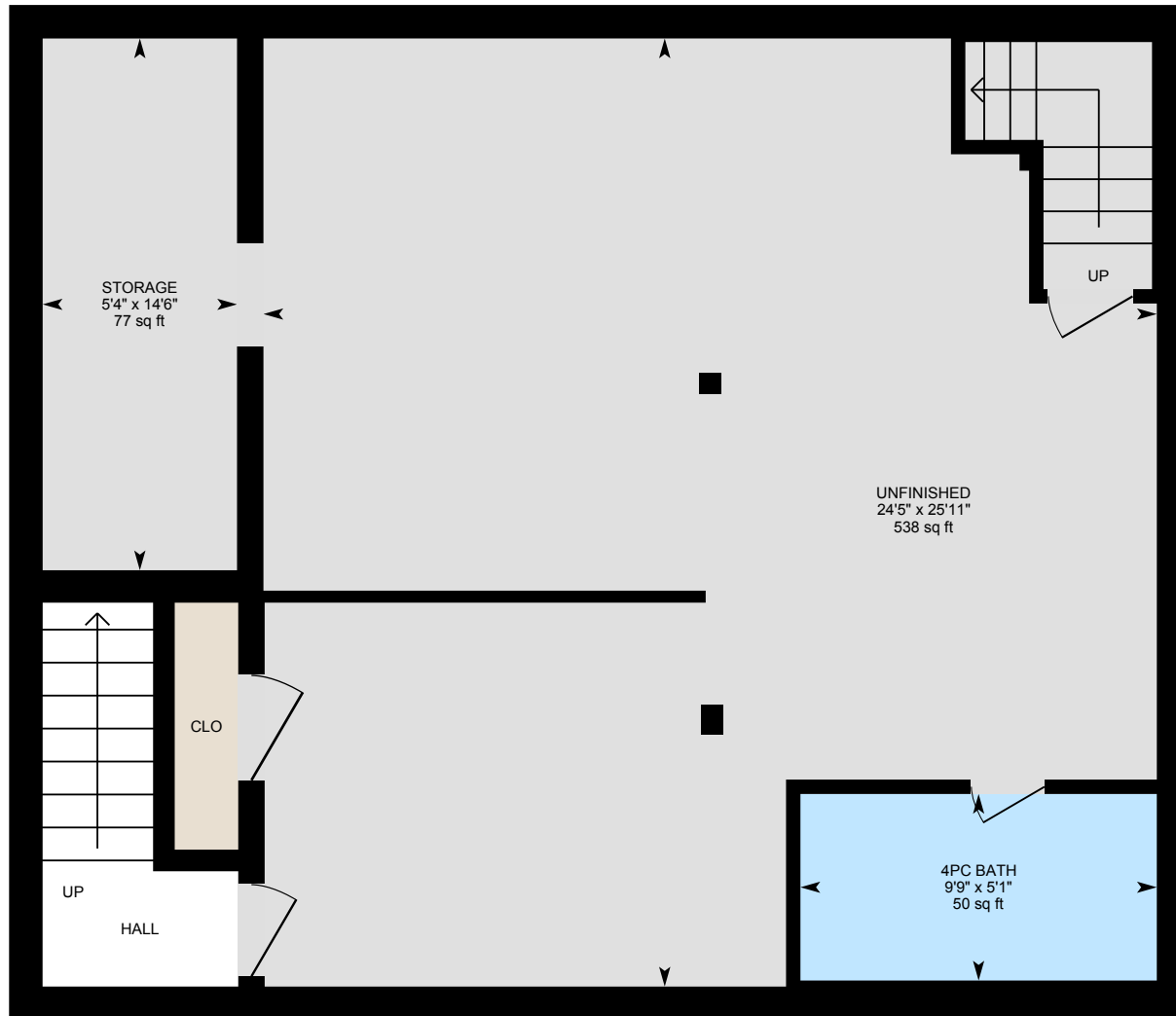


PREPARED: 2022/01/27



# 1364 Douro 3rd Line, Warsaw, ON

**Basement** Total Exterior Area 851.92 sq ft  
Total Interior Area 738.71 sq ft

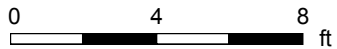
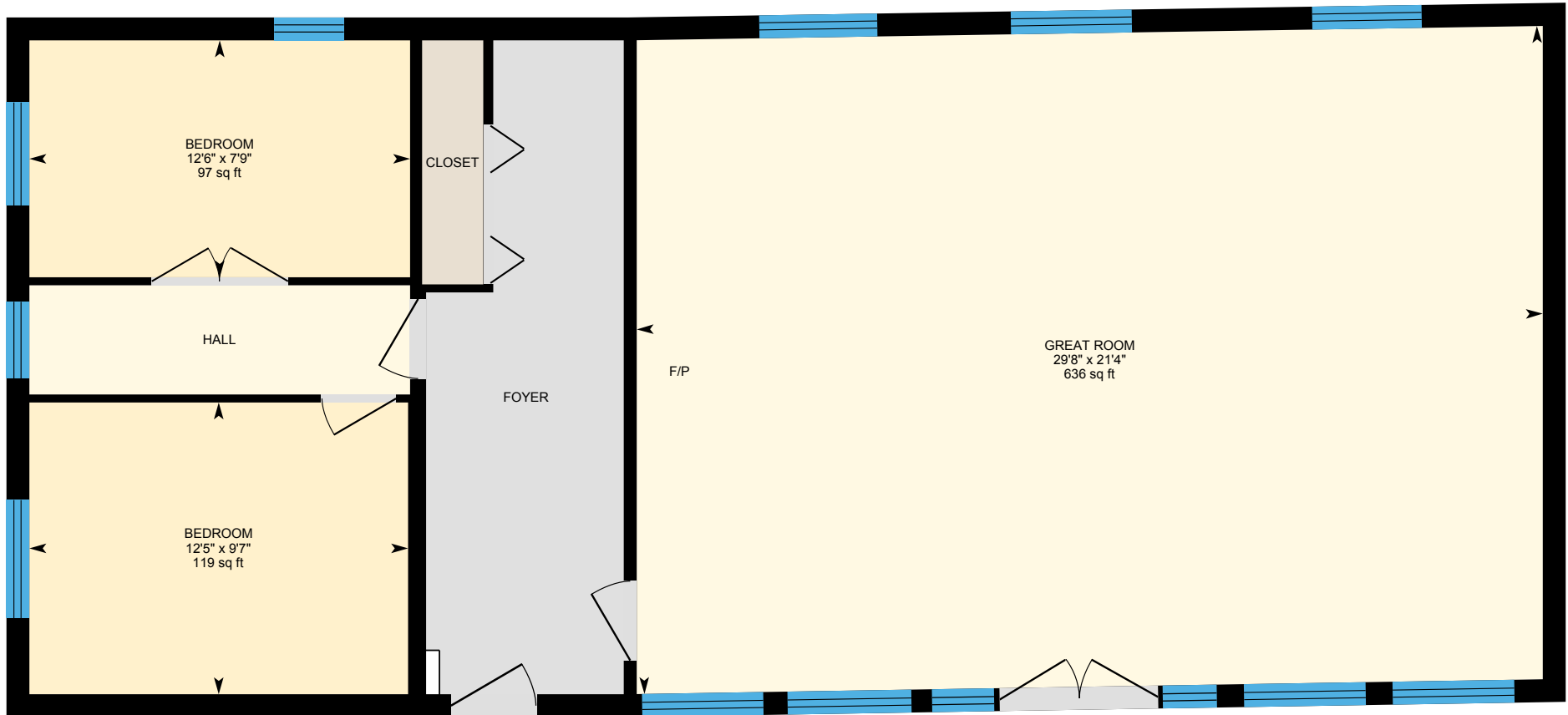


PREPARED: 2022/01/27



# 1364 Douro 3rd Line, Warsaw, ON

Games/music Building Total Exterior Area 1172.30 sq ft  
Total Interior Area 1060.62 sq ft



PREPARED: 2022/01/27



White regions are excluded from total floor area in iGUIDE floor plans. All room dimensions and floor areas must be considered approximate and are subject to independent verification.